

# STYLING RANGE

**HAIRSPRAYS** Use Light Hold hairspray as a working spray to create any look or as a light, touchable finish. Use Strong Hold hairspray to create structure for a strong long lasting finish.

**SHAPING WAX** Weightlessly create texture and volume with medium pliable hold.

**HAIR GEL** This hair gel sculpts hair to add texture and shine while providing firm-hold styling control.

**STYLING MOUSSE** Create weightless volume for all hair textures while delivering shine.

**VOLUMIZEHER** This volumizing spray creates weightless volume while protecting hair from heat and styling tools.



**DRY SHAMPOO** Create volume at root area while soaking up any oil for a fresh look.

**LEAVE-IN CREAM** Delivers moisture while strengthening each hair strand for protection. Also protects from ocean or pool water.

**LEAVE-IN SPRAY** Delivers light moisture while strengthening each hair strand for protection.

**SERUM** Smooths out any flyaways while delivering shine.

**THERMALSTYLEHER** This heat activated smoothing cream delivers moisture and conditioning while protecting the hair for a totally sleek blowdry.

**CURLSDEFINEHER** Creates smooth, soft, defined curls and waves while controlling frizz and flyaways.



[www.GKhair.com](http://www.GKhair.com) | [info@GKhair.com](mailto:info@GKhair.com) | +1 305.390.0044

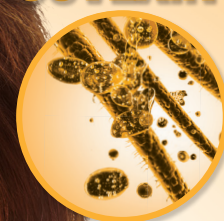
GKhair®, Global Keratin®, Hair Taming System®, Juvexin®, and pH+® are trademarks of Van Tibolli Beauty S.A. r.l.

GKH-M-D&D-EN-07-13

POWERED BY  
**VTE**  
VanTibolli.com

# GK<sup>®</sup> HAIR PROFESSIONAL

FORTIFIED WITH  
**JUVEXIN<sup>®</sup>**



# DO'S & DON'TS





## DO'S DURING THE FIRST 2 DAYS

DO wear your hair down at all times.

DO blow dry and smooth with flat iron at medium to high heat if hair happens to get wet.

DO be the hair envy of all your friends.

## DON'TS DURING THE FIRST 2 DAYS

DON'T wash your hair.

DON'T participate in any activity that may cause you to sweat excessively.

DON'T use styling products.

# Q&A'S

**When applying the GKhair Oil Hair Color on the same day as the GKhair Hair Taming Formula do I still use the GKhair pH+ Clarifying Shampoo prior to the Hair Taming Procedure?** No, when applying the GKhair Oil Hair Color prior to the GKhair Hair Taming Formula on the same day, wash your client's hair twice with GKhair Balancing or Moisturizing Shampoo.

**Are the GKhair Hair Taming Formulas permanent?** No, the GKhair Hair Taming Formulas will gradually wash away over time. The Hair Taming Formulas last up to 5 months depending on the hair type and maintenance and actually penetrate better on chemically treated hair.

**Can I go into the ocean or pool after the GKhair Hair Taming Procedure?** Do not wet hair during the first 2 days. After that, you may swim. However, apply GKhair Leave-In Conditioning Cream to your hair before you get in the water to protect your hair. Rinse well afterwards before shampooing.

**What shampoo do I use after the GKhair Hair Taming Procedure?** The GKhair Balancing or Color Protection Moisturizing Sodium Chloride, SLS & SLES free shampoo and conditioners.

**Can I use styling products during the first 2 days?** Styling products can only be used after the 1st shampoo.

**Can I get the GKhair Hair Taming Procedure while pregnant or nursing?** While there are no known adverse effects, pregnant women and nursing mothers should consult with a physician prior to any type of hair treatment.

**Are the GKhair Hair Taming Formulas good for ethnic hair?** Yes, they are great for ethnic hair.

**Are there any restrictions regarding pregnancy or health?**

Your health is the most important issue in any situation. Since we are not aware of any individual's medical history we always strongly recommend that you consult a physician.

**What is the formaldehyde percentage in your products?** We use Methylene Glycol as an ingredient in our formulas. When heated it may release a miniscule amount of free formaldehyde.

**What is the keratin percentage in your products?** The benefits of keratin come from the natural healing properties which come from the protein within the type of keratin used and not the percentages. Our products contain Juvexin, which is a special blend of proteins that have been optimized specifically for hair and found exclusively in our products worldwide.

**Has anyone ever done a perm and used the GKhair Light Wave or light taming formula to get rid of frizz, but leave the curl from the perm?** All formulas can reduce the perm wave pattern by up to 40%; however, our Light Wave and light taming formulas have proven to be effective in eliminating frizz while maintaining the client's natural wave and curl.

**Can the GKhair Hair Taming Formulas be applied on hair extensions?** Yes, however make sure that they are human hair extensions and to start the application ½ inch away from the bond to avoid removing it.

**Does GKhair provide customer support?** Yes. Please visit our website [www.GKhair.com](http://www.GKhair.com) or call us at +1-888-Juvexin +1(888-588-3946) or +1-305-390-0044

